

AC1200 Enterprise Mesh WiFi System

EW9/EP9

AC1200 Enterprise Mesh WiFi System

Mesh System Discription

AC1200 Enterprise Mesh Wi-Fi System is a wiring-free solution that is special designed for office, restaurant, hotel and other places of WLAN. It adopts new True Mesh technology,using 1167 Mbps dual band. Hardware optimization and built-in antennas optimization technology makes outstanding performance. Unique mesh technology makes a revolution to the installation of the wireless project which avoid wiring and manpower.

Key Specifications

Say Goodby to The Cable

True Mesh technology, Access Point connect each other, we only need one access cable in the whole Mesh system.

Operation and Maintenance

Support local management, remote management, network troubleshooting based on the APP ,achieving network maintenance remotly.

Authentication and Access

Built-in Portal authentication server enables the WEB authentication, account-password authentication, and SMS authentication.

Installation and deployment

Supports four installation modes, Support router and bridge (AP) deployment modes to adapt to multiple scenarios.

Designed for Multi-users

Support 1200M 11AC Wave 2.

Kill the dead angle

Built-in omnidirectional antenna design and Beamforming+ technology make the signal in the system stable and reliable,Support Seamless Roaming.

System Discription

True Mesh

IP-COM EW9+EP9 products apply True Mesh technology, the devices can fulfill plug and play, self-discovery, self-configutation and self-networking. Free your wire, free your hands.

1200M 11AC Wave 2 Wi-Fi

Using 802.11 ac Wave 2 MU (MIMO) technology, faster your surfing experience and strongly improve the capacity.

Omni Antenna Design

IP-COM Mesh wifi products use innovative signal design, built-in antennas combine with beam forming technology, focus signal on the user's location, greatly improved the quality of the wireless coverage, three sets can cover 500 square meters.

Seamless Roaming

Mesh network supports seamless roaming, when wireless users roaming among multiple nodes, the system can maintain the user's IP address information and keep the certification status, user roaming from node A to node B rapidly, roaming speed < 50 ms, the users can feeling nothing in the surfing experience .

APP Management

IP-COM mesh products support APP cloud management, the management and maintenance of devices can be realized through mobile APP. By using ip-com cloud account login, the APP can be managed and maintained remotely.

Smart Bandwidth Management

With the intelligent bandwidth management technology (QoS), the device will adjust the bandwidth intelligently according to the utilization rate of the bandwidth and the network application.

Dual WAN capacity

All gigabit network port design, provides 2 WAN\LAN turntable ports and 2 fixed LAN ports, it can flexibly match the number of network ports according to the actual network demand and meet the actual application network demand. In dual WAN network, WAN port bandwidth will be automatically superimposed and load balanced.

Captive Potal

Built-in multiple authentication management systems, authentication based on Portal, can completely solve the problem of traditional wireless password sharing by WiFi sharing software, network being rubbed, and internal network data being stolen.

One key authentication: authentication based on Portal, customizable Portal push page, users don` t need account and password to access to the Internet.

WEB Account password authentication: based on Portal authentication, the Portal push page can be customized, and users need to verify account and password to access to the Internet.

SMS authentication: based on Portal authentication, the Portal push page can be customized. Users need to enter their mobile phone number and pass the authentication before they can access the Internet.

Diversity Founction Mount Bracket

Combined with easy mounting bracket and fittings, four installation modes can be realized: wall mount/ceiling mount/pole mount/desk mount.

EW9

AC1200 Enterprise Mesh WiFi System

1200M 11AC Wave2 Wi-Fi, True Mesh, Gigabit Port, Dual WAN , Smart Bandwidth Management, Captive Portal, APP Management

Product Description

EW9 is a wireless router from IP-COM specially designed for offices, restaurants, hotels and other places. With advanced true Mesh technology and innovative built-in antennas design, enterprise users can adjust the quantities of EP9 according to the application area and combined with EW9 to form a distributed Mesh network without dead zone. EW9 supports router mode and bridge (AP) mode, which can meet the requirements of small project with Mesh network, or partial Mesh network for large projects. The device adopts full gigabit network interface design with maximum support for dual WAN. It integrates various enterprise functions such as intelligent bandwidth control, WEB authentication, SMS authentication, etc., and can be applied to a variety of application scenarios.



Key Specifications

- * 1200Mbps 11AC Wave 2 Wi-Fi
- * 4*Gigabit ports, dual WAN capacity
- * True Mesh technology
- * APP Management
- * Supports smart bandwidth control, seamless roaming, web & SMS authentication
- * Supports wall mount/ceiling mount/pole mount/desk mount

EP9

AC1200 Enterprise Mesh WiFi System

1200M 11AC Wave2 Wi-Fi, Mesh Technology, Seamless roaming, Wall mount/ceiling mount/pole mount/desk mount installment

Product Discription

EP9 is Mesh Wi-Fi system extender from IP-COM specially designed for office, restaurant, hotel and other scenarios. With advanced true Mesh technology and innovative built-in omnidirectional antennas design, enterprise users can adjust the quantities of EP9 according to the application area and combined with EW9 to form a distributed Mesh network without dead zone. EP9 provides a variety of mounting methods by mounting brackets and accessories, it supports wall mount/ceiling mount/pole mount/desk mount, and can be applied in a variety of scenarios.



Key Specifications

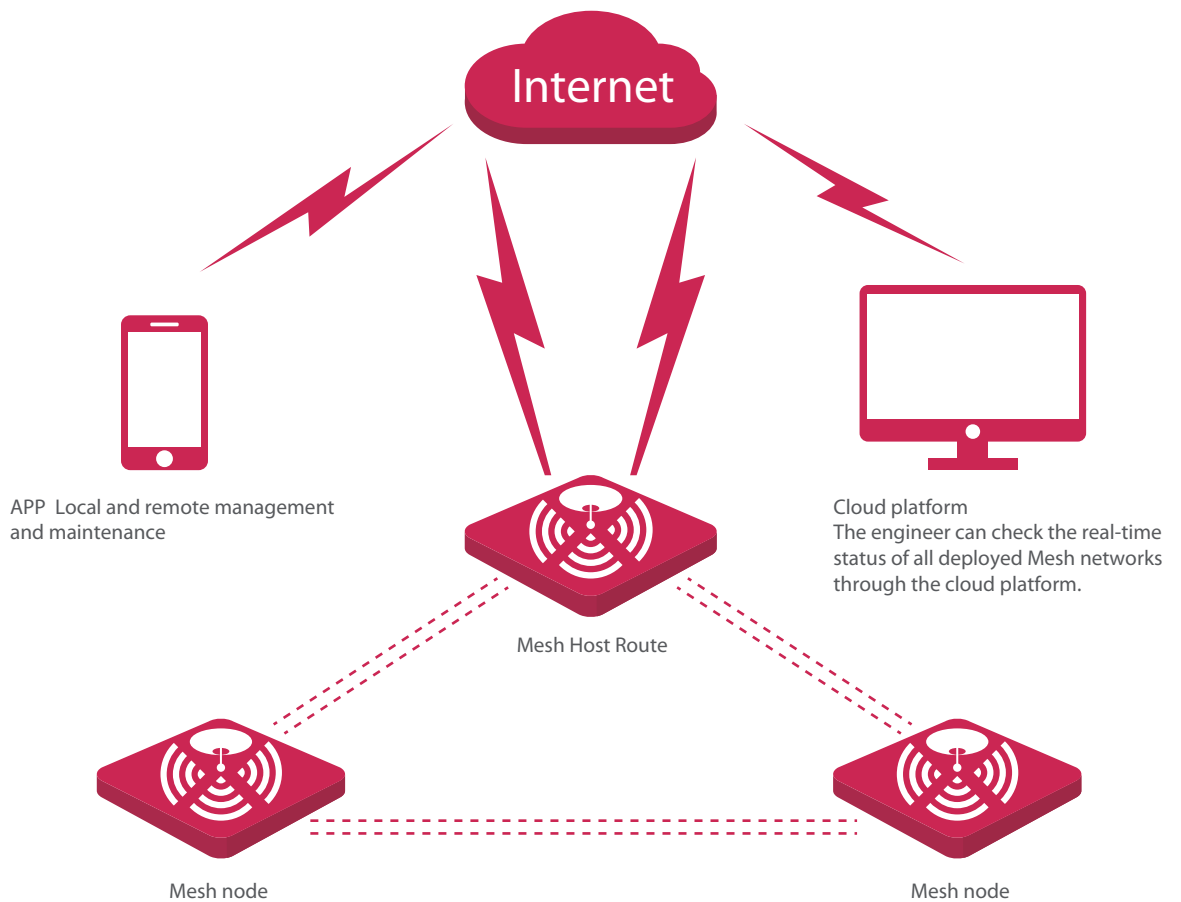
- * 1200Mbps 11AC Wave 2 Wi-Fi
- * True Mesh technology
- * Seamless Roaming
- * APP Management
- * Supports wall mount/ceiling mount/pole mount/desk mount

Application Scenarios

Mesh Network Topology for Small Project

It is designed for office, restaurant, hotel and other SMB segment.

- * The Mesh device works in router mode, and the host node of Mesh ACTS as the network core router for data forwarding.
- * Two Mesh satellites nodes and the host build a mesh system.
- * APP Local and remote management and maintenance. The engineer can check the real-time status of all Mesh networks that they have done through the cloud platform

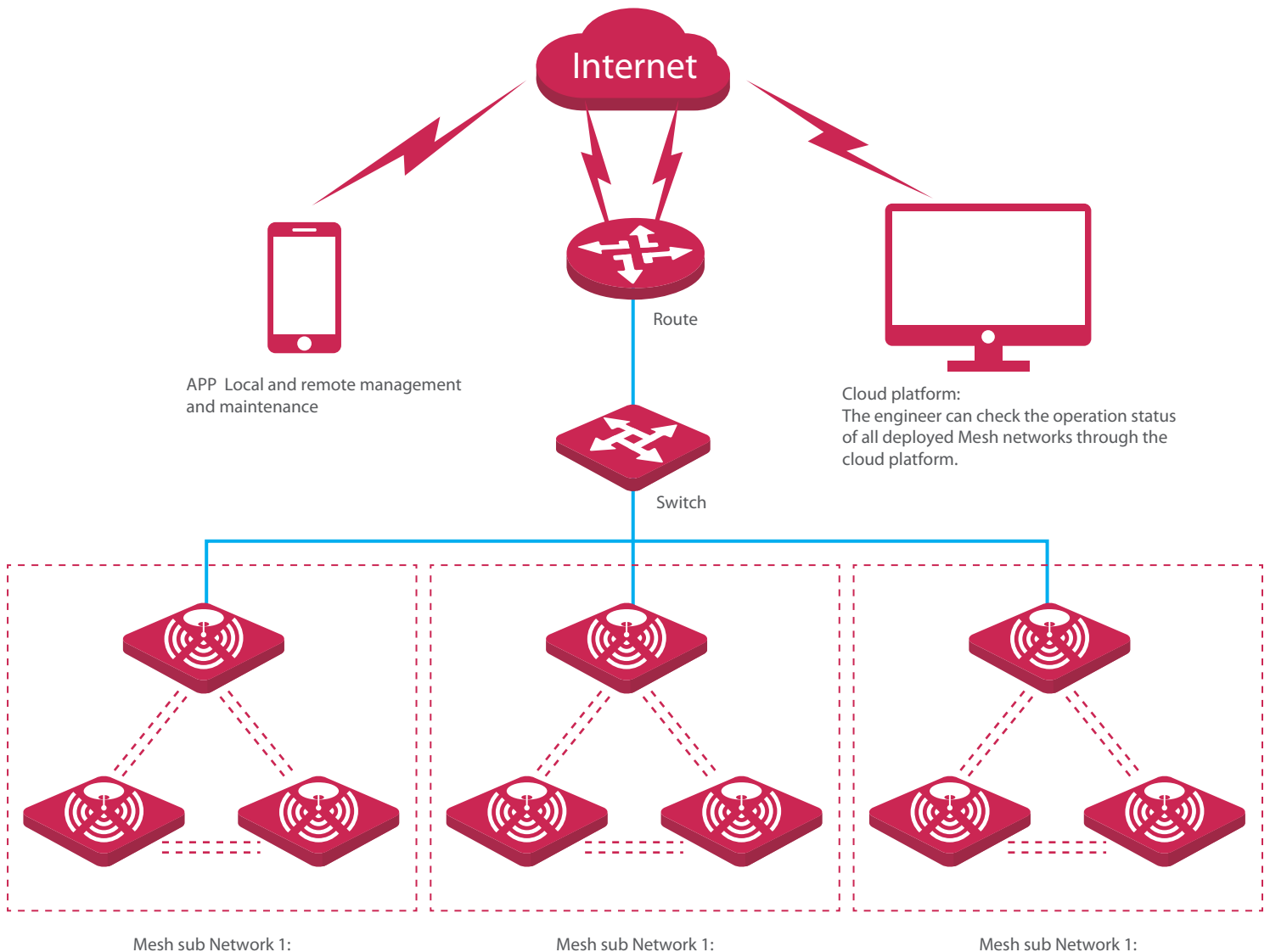


Application Scenarios

Mesh Network Topology for Middle Project

It is designed for office, restaurant, hotel and other enterprise project.

- * Three Mesh products are placed in one area to form an independent mesh network system. Mesh devices of different floors and areas are connected to the switch through the network.
- * All the mesh nodes work as AP mode at the same time. All nodes can be managed locally and remotely by the APP.
- * The engineer can check the operation status of all deployed Mesh networks through the cloud platform.



Specification

| Category | | EW9 | EP9 | EW12 | EP12 |
|-----------------------------|---|---|---|---|--|
| Hardware Specification | Frequency | Dua-Band: 2.4G+5G | Dual-Band: 2.4G+5G | Tri-Band: 2.4G+5G+5G | Tri-Band: 2.4G+5G+5G |
| | Wireless Rate | 300+867Mbps | 300+867Mbps | 400+867+867Mbps | 400+867+867Mbps |
| | 11AC Wave 2 | √ | √ | √ | √ |
| | Beamforming | √ | √ | √ | √ |
| | Networking Technology | True Mesh | True Mesh | True Mesh | True Mesh |
| | Wireless Power | 2.4G: 19dBm 5G: 19dBm | 2.4G: 19dBm 5G: 19dBm | 2.4G: 20dBm 5G: 20dBm | 2.4G: 20dBm 5G: 20dBm |
| | Antenna | 4*4dBi, Horizontal omnidirectional antenna | 4*4dBi, Horizontal omnidirectional antenna | 6*4dBi, Horizontal omnidirectional antenna | 6*4dBi, Horizontal omnidirectional antenna |
| | Interface | 1*Power Port, 1*Reset button, 4*Gigabit Port | 1*Power Port, 1*Reset button | 1*Power Port, 1*Reset button, 4*Gigabit Port | 1*Power Port, 1*Reset button |
| Software Specification | WAN Ports | dual WAN | - | dual WAN | - |
| | QoS | √ | √ | √ | √ |
| | Seamless Roaming | √ | √ | √ | √ |
| Installation and Deployment | Mounting | wall mount/ceiling mount/ pole mount/desk mount | wall mount/ceiling mount/ pole mount/desk mount | wall mount/ceiling mount/ pole mount/desk mount | wall mount/ceiling mount/ pole mount/desk mount |
| | APP Installation and Configuration | √ | √ | √ | √ |
| | Route Mode and Bridge Mode | √ | X | √ | X |
| | Manage by AC | X | X | √ | √ |
| | Mesh nodes in one Mesh System | Typical: 3 Max: 9 | Typical: 3 Max: 9 | Typical: 5 Max: 18 | Typical: 5 Max: 18 |
| Management and Maintenance | APP Management | √ | √ | √ | √ |
| | Cloud management | X | X | √ | √ |
| Authentication Access | Local Certification | √ | √ | √ | √ |
| | Cloud Certification | X | X | √ | √ |
| | Third Party Authentication Access | X | X | √ | √ |
| | Behavior Strategy | X | X | √ | √ |
| Dimensions | Product: 170*170*36mm Packing: 260*175*55mm | Product: 170*170*36mm Packing: 260*175*55mm | Product: 170*170*36mm Packing: 260*175*55mm | Product: 170*170*36mm Packing: 260*175*55mm | |
| Packing List | Bracketx1, Boltx4, Expansion sleevex4, Expansion scewx4, Ribbonx2 | Bracketx1, Boltx4, Expansion sleevex4, Expansion scewx4, Ribbonx2 | Bracketx1, Boltx4, Expansion sleevex4, Expansion scewx4, Ribbonx2 | Bracketx1, Boltx4, Expansion sleevex4, Expansion scewx4, Ribbonx2 | |
| Packing Quantities | 20 | 20 | 20 | 20 | |
| Power Dimensions | External switching power supply 12V/1A | External switching power supply 9V/1A | External switching power supply 12V/2A | External switching power supply 12V/2A | |
| Certification | FCC\CE\RoHS | FCC\CE\RoHS | FCC\CE\RoHS | FCC\CE\RoHS | |



IP-COM NETWORKS CO.,LTD.

Tower E3, No.1001, Zhongshanyuan Road,
Nanshan District, Shenzhen, China. 518052
Service: info@ip-com.com.cn
Inquiry: marketing@ip-com.com.cn
Tel: +86-755-27653089