

G1008

8-Port Gigabit Unmanaged Desktop Switch

G1008

8-Port Gigabit Unmanaged Desktop Switch

Products Description

G1008 is a green energy-conservation layer2 switch . It is specially designed to build a fast, convenient and easy-maintained wired access network. G1008 apply with the world's leading chipset vendor Broadcom solution, which brings a strong switch performance. The all-steel-shell body improves the heat dissipation and ensures the stability. Professional port lightning-proof enables to reduce the damage of severe weather. It supports full wire-speed non-blocking forwarding and port auto-flip. With high enterprise-level art, it is the ideal solution to build your gigabit wired access network (SMBs, hotels, Video Surveillance).



- 8 10/100/1000Mbps RJ45 ports
- Desktop and wall-mount
- Plug and play, Without configuration

Key Feature

- Compliant with IEEE802.3, IEEE802.3u, IEEE802.3x, IEEE802.3ab
- Store & forward, share memory, non-blocking architecture
- Supports MAC address self-learning and auto MDI/MDIX
- Provide 8 10/100/1000Mbps auto-negotiation ports
- Supports full-duplex 802.3x flow control and half-duplex backpressure flow control
- Supports 4K MAC address list, MAC address learning and auto-ageing
- Supports port Inductive Lightning Protection up to 4KV
- Supports loop detection and prevention
- Fanless design
- Desktop and wall-mount Design
- Plug and play, no need configuration

Product Features



Full wire-speed

Provide 8 10/100/1000M auto-negotiation RJ45 ports. All ports have the the wire-speed forwarding capability and support IEEE 802.3x full-duplex flow control and half-duplex backpressure flow control.



Excellent Lightning-Proof design

Integrated professional lightning-proof circuit which supports port lightning-proof (common mode protection 4KV). Effectively reduce the damage to the network system caused by the thundery weather.



Loop guard

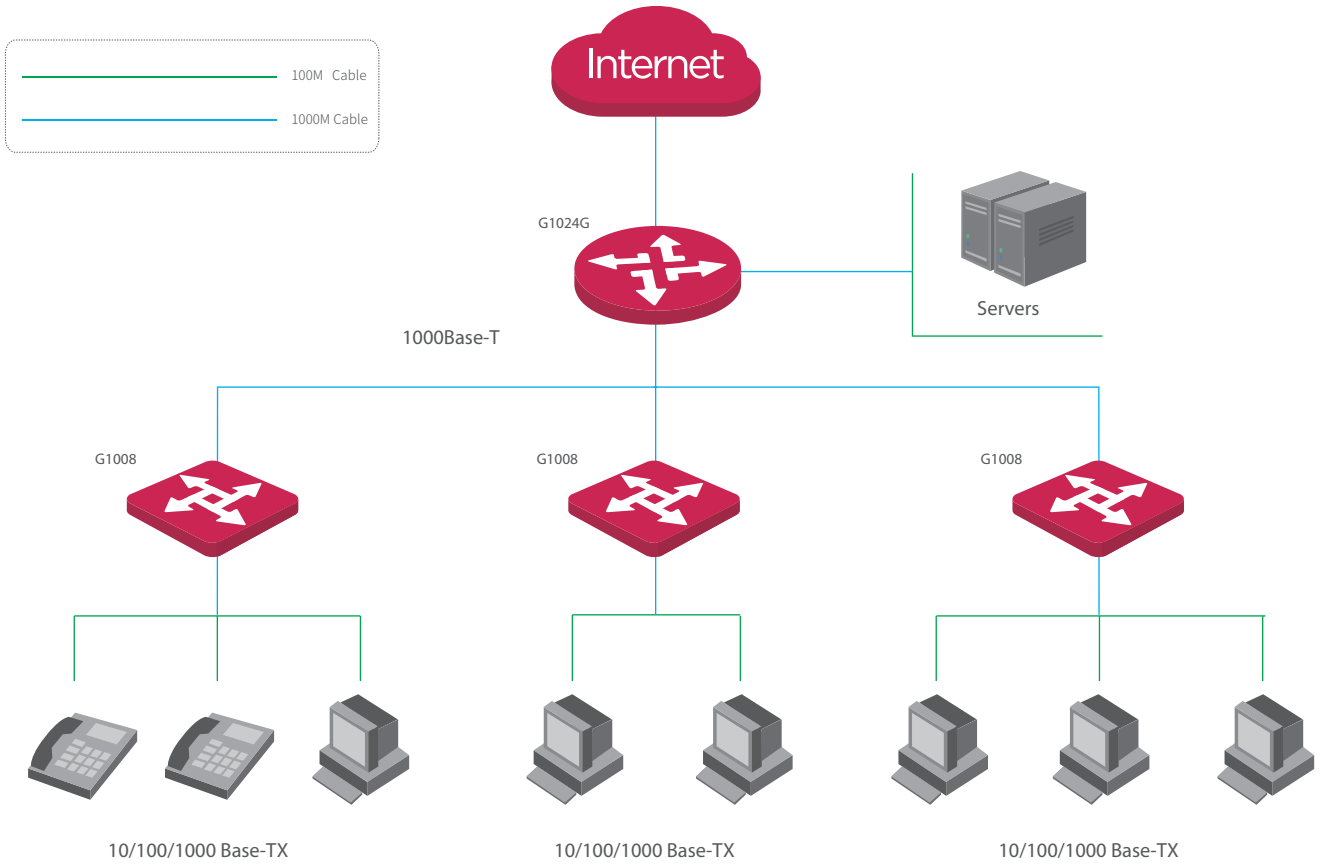
Supports loop detection and prevention, adopts advanced loop algorithm to prevent loop effectively.



Easy to use

Plug-and-play, which helps you quickly build Gigabit wired network and greatly simplify the management and maintenance of equipment, supports desktop and wall-mount, easy to install.

Application Scenarios



Product Model	G1008
Hardware Features	
Standards&Protocols	IEEE 802.3、IEEE 802.3u、IEEE 802.3ab、IEEE 802.3x
MTBF	≥100,000 hours
LED	8*Link/Ack ,1*Power
Interface	8*10/100/1000M J45 ports (Auto MDI/MDIX)
Transfer Method	Store-and-Forward
Switching Capacity	16 Gbit/s
Packet Forwarding Rate	11.9Mpps
Address Table	4K MAC
Power	DC: 9V 600mA
Dimension (L×W×H)	186mm x 106mm x 33mm
Power Consumption	<5.4W
Fan Quantity	Fanless
Environment	Operating Temperature: 0°C~40°C Storage Temperature: -40°C~70°C Operating Humidity: 10%~90% non-condensing Storage Humidity: 5%~90% non-condensing
Lightning Proof	RJ45 Ports>4KV
Advance Feature	Loop Detection&Prevention
Certification	FCC、CE、RHOS

IP-COM

World Wide Wireless

Headquarters

IP-COM Networks Co.,Ltd.

Tel: +86 755-27653089

Fax: +86 755-27657178

Email: marketing@ip-com.com.cn

Website: www.ip-com.com.cn

ADD: Tower E3,No1001,Zhongshanyuan Road,Nanshan District,Shenzhen,China.

Copyright©2016 P-COM Networks Co., Ltd. All Rights Reserved.

