

# G3224T

24-Port Gigabit Managed Switch 2 combo SFP Slots

# G3224T

## 24-Port Gigabit Managed Switch with 2 combo SFP Slots

---

### Products Description

G3224T is a green energy-conservation layer2 managed switch which is researched and developed and designed independently. It is specially designed to build a fast, convenient and easy-maintained wired aggregation and access network. G3224T apply with the world's leading chipset vendor Broadcom solution, which brings a strong switch performance. It provides fruitful management features and security protection system. With high enterprise-level art, it is the ideal high performance solution to build gigabit wired access network (SMBs, education, hotels, bars, parks and data center access).



- 24 10/100/1000Mbps RJ45 ports, 2 combo Gigabit SFP slots
- 19-inch rack-mountable, 1U steel case
- Web managed, easy to use

## Key Feature

- Compliant with IEEE802.3, IEEE802.3u, IEEE802.3x, IEEE802.3ab
- Store & forward, share memory, non-blocking architecture
- Supports MAC address self-learning and auto MDI/MDIX
- Provide 24 10/100/1000Mbps auto-negotiation ports, 2 Gigabit combo SFP slots
- Supports full-duplex 802.3x flow control and half-duplex backpressure flow control
- Supports 8K MAC address list, MAC address learning and auto-ageing
- Supports Power Inductive Lightning Protection up to 6KV
- Supports jumbo frame forwarding
- Supports formation of broadcast storm
- Supports QoS and DSCP,Cos(802.1P) priority, each port provides 4 priorities for forwarding queue
- Supports 802.1Q VLAN and maximum groups of QVLAN up to 200
- Supports IGMP snooping function
- Supports 802.1x authentication based on port
- Supports STP, RSTP, IGMP Snooping V1&V2, full-duplex 802.3x flow control and half-duplex backpressure flow control
- Supports spanning tree protocol(STP), including 802.1d(Spanning Tree) and 802.1w(Rapid Spanning Tree) protocol
- Supports Link Aggregation, including static Link Aggregation and LACP, support 6 Trunk groups and 8 aggregate ports per group
- Supports defending from ARP attacks, worm-virus attacks, Dos attacks, MAC-address attacks Support quaternary-smart-binding, searching mainframe for smart binding
- Supports smart configuration for network bar and enterprise.
- Built-in switching power adapter, support AC 110-240V 50/60Hz input
- Standard 19-inch rack-mountable, 1U steel case
- Supports firmware upgrading ways of TFTP in CLI and HTTP in Web
- Supports Telnet, CLI, Web and SNMP, system log, TFTP&HTTP for upgrading firmware"

## Product Features



### Multiple and flexible ports

Provide 24 10/100/1000M auto-negotiation RJ45 ports, 2 combo Gigabit SFP slots. All ports have the wire-speed forwarding capability and support IEEE 802.3x full-duplex flow control and half-duplex backpressure flow control. The multiple ports provide great flexibility for users to build networks and allow users to quickly build all kinds of wired networks.



### Multi-service support capability

It Supports Multi-service such as Port VLAN, 802.1Q VLAN, link aggregation, port mirroring, STP/RSTP/MSTP, IGMP Snooping, port speed-limitation, QoS, etc. It helps you to build a high-performance network.



### Quiet and Green Energy Conservation Design

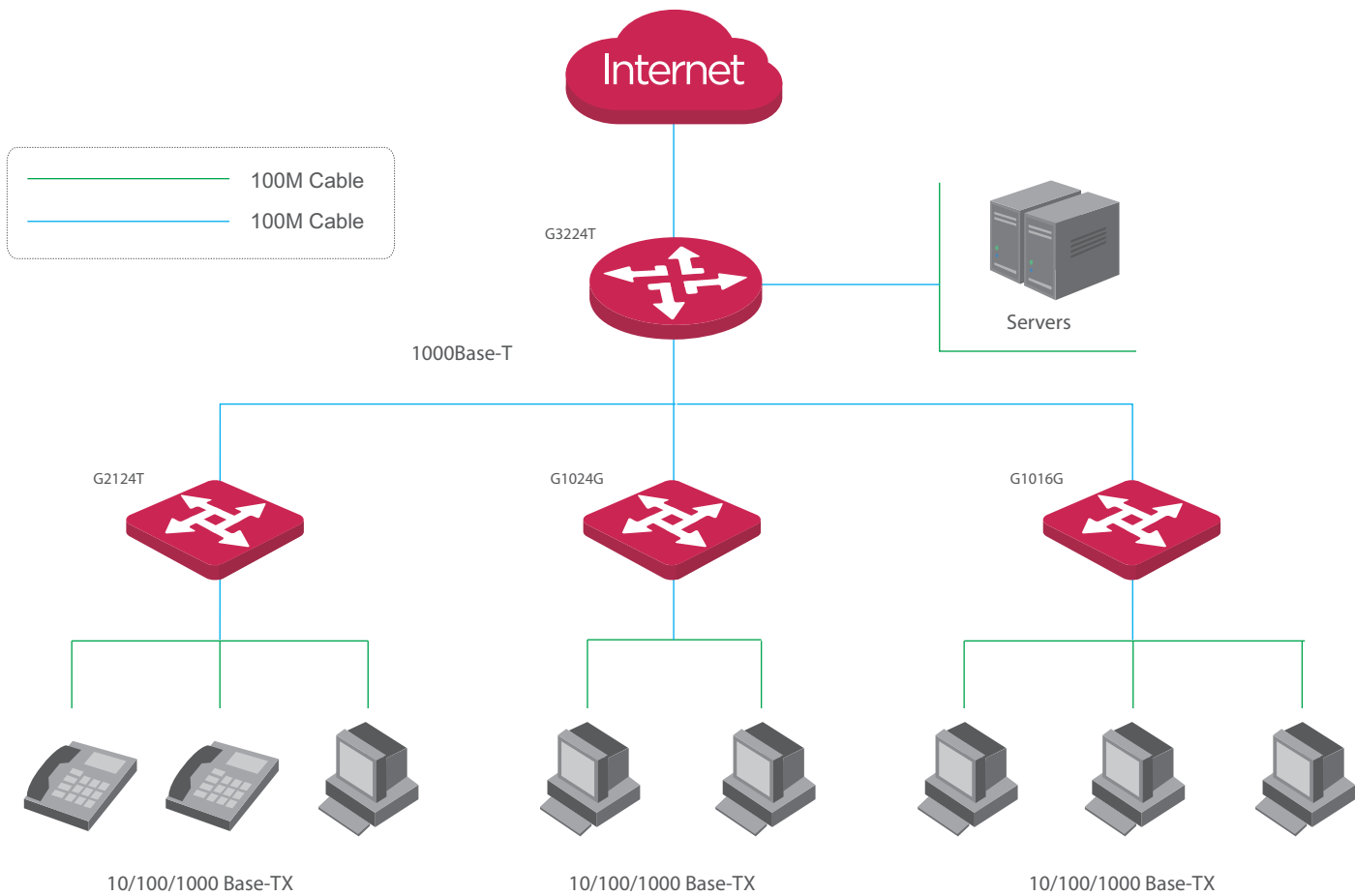
Adopts low-power consumption IC Plus chipset solution. Fanless design enables quiet and energy conservation. When no data transmits in the port, it will automatically change into power-saving state and utmost reduce power consumption and operating costs.



### Easy to use

Plug-and-play, which helps you quickly build Gigabit wired network and greatly simplify the management and maintenance of equipment, It supports desktop and standard 19-inch rack mounted installation with two pairs of rack-mounted hangers, which can be easily installed in a standard 19-inch machine room cabinet.

# Application Scenarios



Product Model		G3224T
Hardware Features		
Standards&Protocols	IEEE 802.3、IEEE 802.3u、IEEE 802.3z、IEEE 802.3ab、IEEE 802.3x、IEEE 802.1D、IEEE 802.1w、IEEE 802.1Q、IEEE 802.1p	
Interface	24*10/100/1000Mbps RJ45 Ports(Auto Negotiation/Auto MDI/MDIX) 2*1000Mbps SFP	
Transfer Method	Store-and-Forward	
Switching Capacity	56Gbps	
Packet Forwarding Rate	35.7Mpps	
Address Table	8K	
Power Consumption	<20W	
Power input	100-240VAC, 50/60Hz	
Dimension (L×W×H)	440mm*284mm*44mm	
Fan Quantity	Fanless	
Environment	Operating Temperature: 0°C~40°C Storage Temperature: -40°C~70°C Operating Humidity: 10%~90% non-condensing Storage Humidity: 5%~90% non-condensing	
Software Features		
Port Feature	IEEE802.3x flow control (full duplex) Storm control based on port rate percentage PPS based storm control	
QoS	Supports Port/Flow- based Rate Limiting Packet re-direction Committed Access Rate (CAR) Supports 8 priority queues Supports Queue scheduling: SP, WRR Supports 802.1p CoS/DSCP priority	
Link Aggregation	LACP Up to 6 aggregation groups, containing 8 ports per group	
Loop back	Supports Spanning Tree STP/RSTP	
VLAN	Port based VLAN Protocol based VLAN	
Multicast	Supports IGMP V1/V2	
Mirroring	Port mirroring	
Security Feature	User level management and password protection 802.1X authentication centralized MAC address authentication ARP Detection	
Management	Configuration via CLI, Telnet, and Console port SNMPv1/v2/v3 Web-based GUI management Support system log Ping, Tracert	

**IP-COM**  
World Wide Wireless

## Headquarters

IP-COM Networks Co.,Ltd.

Tel: +86 755-27653089

Fax: +86 755-27657178

Email: [marketing@ip-com.com.cn](mailto:marketing@ip-com.com.cn)

Website: [www.ip-com.com.cn](http://www.ip-com.com.cn)

ADD: Tower E3, No1001, Zhongshanyuan Road, Nanshan District, Shenzhen, China.

